



Volume 8, Number 9

September 2024

The NMRA's *Turntable* is a monthly publication that, like a railroad turntable, will lead you in several directions on the internet.

This e-publication is a collection of railroad and model railroad videos, podcasts, websites, and/or other information freely available on the internet that we think may be of interest to you. The NMRA claims no ownership of this information, nor do we endorse its creators or their websites. The *NMRA Turntable* will not promote individuals or their for-profit ventures.

Having trouble seeing this email? [View as Webpage](#)



An in depth and candid interview with Walthers President, Stacey Walthers Naffah.

Stacey talks about what it's like growing up in the family business, what it means to be a female boss in the model railway hobby, Walther's fantastic subscription service BUILD A WORLD, PLUS exciting new plans to take model railroads into senior living facilities.

## Detroit Model Railroad Club





## [Detroit Model Railroad Club](#)

A visit to the Detroit Model Railroad Club during one of their many open houses.

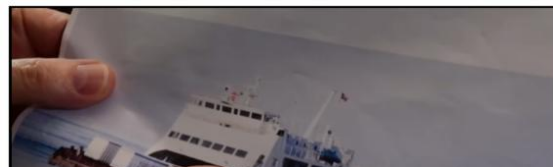
## Easy Freight Car Weathering w/o an Airbrush



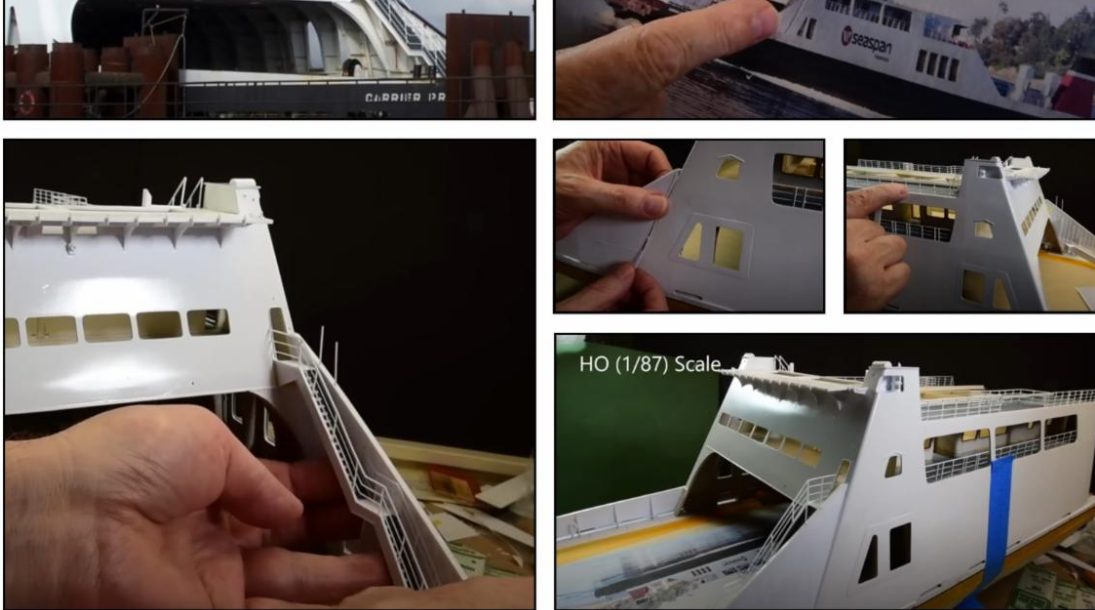
## [Easy Freight Car Weathering w/o an Airbrush](#)

A tutorial on how to weather an HO scale freight car without an airbrush.

## Scratchbuilding Challenges







## Scratchbuilding Challenges

Boomer considers scratchbuilding to be somewhat of an art form and not just a scientific technical exercise. Why? Because not one build is ever the same and like art you have to solve problems you encounter all the time as each one is unique and requires a different approach to solve.

Oftentimes there is no simple solution, but rather, spontaneous creative thinking to solve the problem. The problems you must overcome are unique and eminently rewarding. Therefore, every model is worth the effort in the end if you finish it.

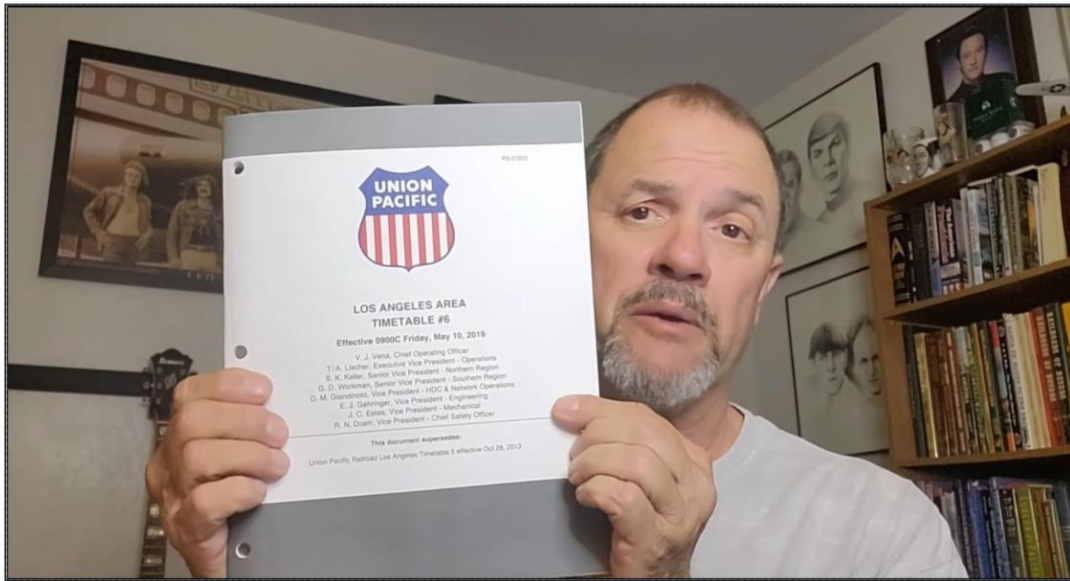
## Montana Northern Layout



## Montana Northern Layout

In this video scenery construction has started and a new product is used for river rocks. Also shown is a newly decaled locomotive and a woodchip hopper car. This layout is coming to life!

## How A Railroad Timetable Works



## How A Railroad Timetable Works

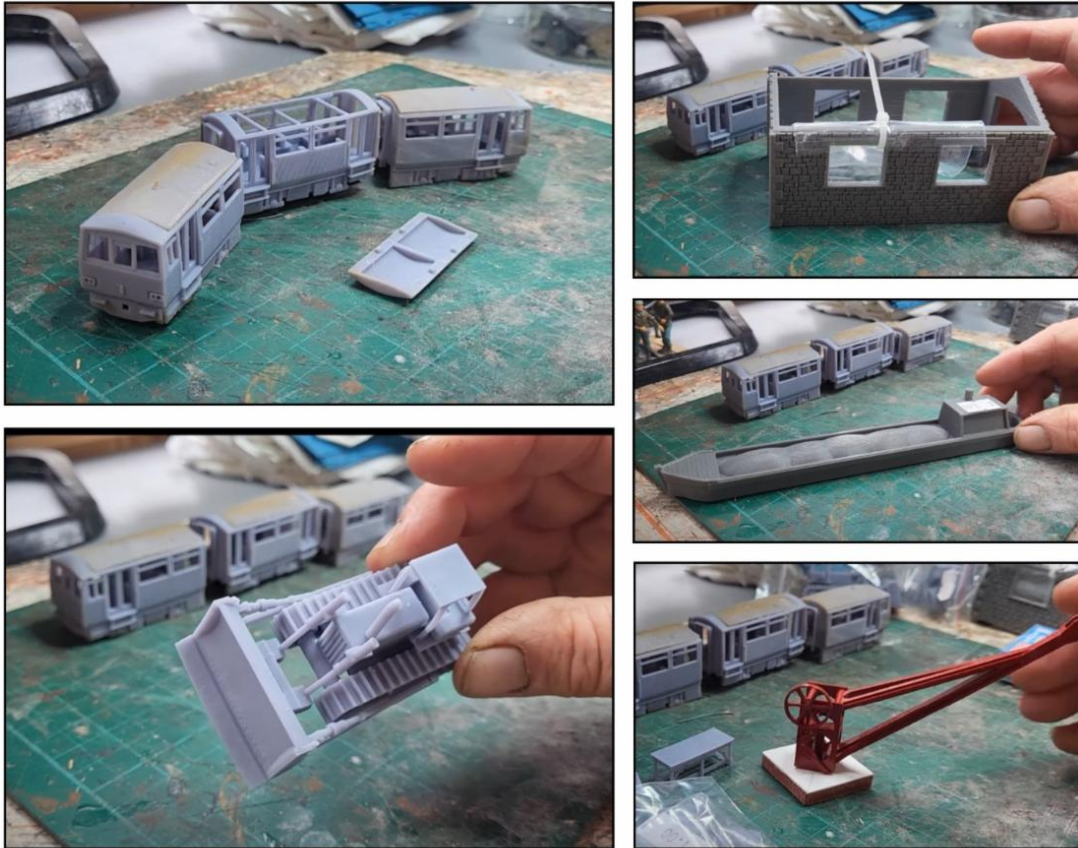
Railroad timetables are chock full of information most folks would never think about. But railroaders, particularly trainmen, have to know, or at least have instant access to it. This video will explain the pertinent information in a Union Pacific Timetable.

## NMRax - Monthly Virtual Clinics

A screenshot of the NMRA ORG YouTube channel page. The channel name is "NMRA ORG" with 5.09K subscribers and 354 videos. The page shows a grid of video thumbnails for "NMRax" virtual clinics. The thumbnails include dates and times for various shows, such as "June 29th, 2024" (1:33:40), "April 27th, 2024" (3:24:51), and "March 23rd, 2024" (3:11:40). There are also thumbnails for "Piedmont Junction" and "March 20".



## 3D Prints For Model Railways



## [3D Prints For Model Railways](#)

Having built three 3D printed locos for this OO9\* narrow gauge layout Chalkdon, Woody looks at some of the other things available and gives some idea of costs. He gets most from **3D Printing For Charity** that attends many of the shows in the Lincolnshire and East Midlands area (usual disclaimer of just being a very satisfied customer). All profits are donated to the Lincs and Notts Air Ambulance which is a great cause to support. You may be surprised at just what is available and at a very reasonable cost.

[ \*OO9 is 4mm to the foot scale (that is OO or 1/76) but using 9mm track gauge (the same size as N gauge). This is narrow gauge modeling and is meant to represent 2ft gauge in real life. The name comes from OO scale and 9mm track. It is a very similar scale to HOe (HOn30) which is HO narrow gauge, so 1/87 scale on 9mm track.]

## Custom Structures For Your Layout







## [Custom Structures For Your Layout](#)

Use modular structure elements to create any size custom structure for your model railroad or other display. *Steve's Trains* used Woodland Scenics/DPM kits for these, but other manufactures like ITLA offer similar modular structure elements you can assemble in custom arrangements. Both make modular wall panels in N, HO, and O scales.

## **Lake County Model Railroad Club**



## [Lake County Model Railroad Club](#)

A visit to the Lake County Model Railroad Club in Wauconda, IL for their open house.



# Oklahoma Model Railroad Association



## [Oklahoma Model Railroad Association](#)

Take a tour of the outside where you can see real trains going by and the inside seeing their 6,000 sq ft HO scale layout!

## Review: Athearn's UP CA-10 Caboose



## [Review: Athearn's UP CA-10 Caboose](#)

Does a Caboose Make Noise? - Unboxing and Product Review of

## Athearn's HO Scale UP CA-10 Caboose!

Union Pacific's CA-10 cabooses were built in 1975 by International Car in Kenton, Ohio. There was a total of 50 cars in this class numbered from 25700 to 25749. These were steel cabooses similar in overall appearance to previous UP steel cupola CA-8 & CA-9 caboose classes. The CA-10 cars rode on Buckeye outside swing hanger roller bearing trucks, which gave crews a smooth ride.

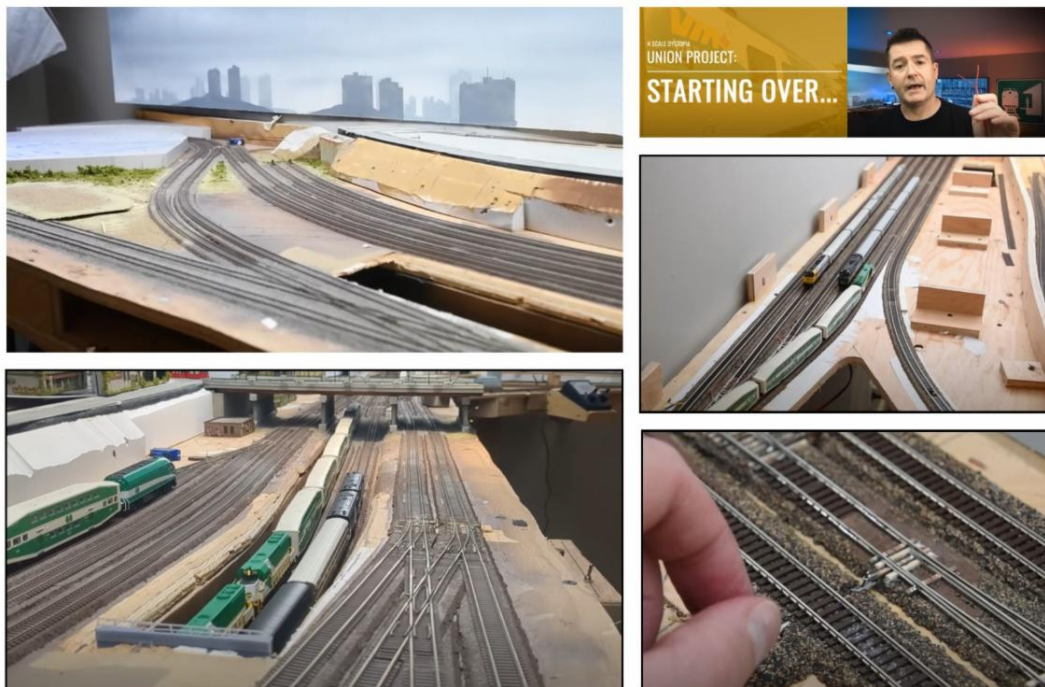
All 50 CA-10 cars were equipped for system wide pool service, which is what the "P" on the cupola stood for. These cars could operate anywhere on the UP system on run-through trains as well as on connecting railroads like Southern Pacific, Chicago & Northwestern, Burlington Northern and Rock Island.

This HO scale model train caboose from Athearn Genesis has all the bells & whistles - literally! This car has DCC controllable onboard lights and sounds. It's also exquisitely detailed.

As usual, Dan evaluates the model train's packaging, prototype accuracy, paint & detail, and how well it operates and conforms to applicable standards. If you're a fan of cabooses in general, Union Pacific, or just love model trains, be sure to check out this unboxing and product review!

# Starting Over!

"Why this N Scale Layout Needs to be Rebuilt"



## [Starting Over!](#)

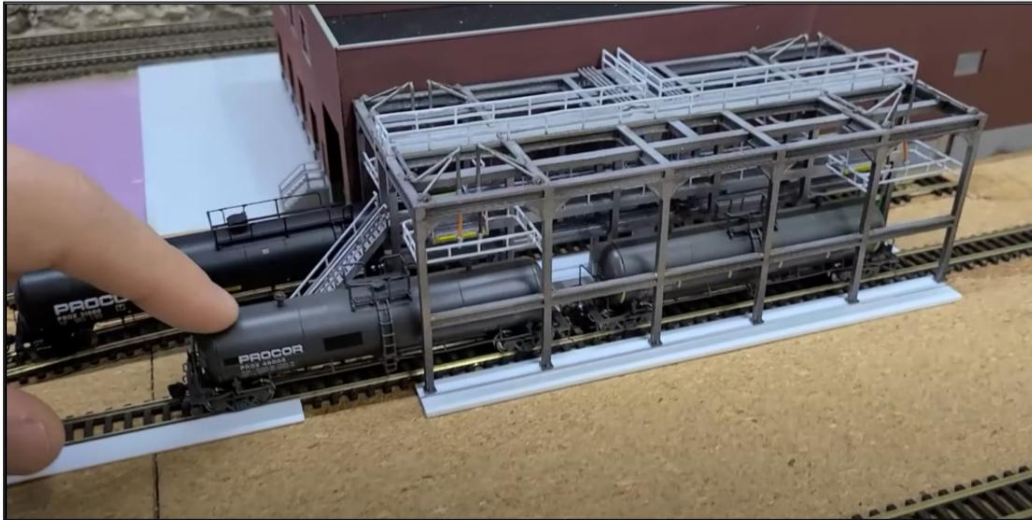
In this video, the presenter shares the unexpected challenges that have led him to make the difficult decision to completely tear down and rebuild his N scale model railway layout. Despite months of hard work and dedication, unreliable trackwork, faulty wiring, and compromised materials



have made the layout unsustainable. He walks through the problems he encountered, the lessons he learned, and his plans for the new and improved layout.

Whether you're a seasoned model railroader or just curious about the process, there's much to take away from this experience. He invites you to follow along as he begins the journey of starting from scratch, focusing on smarter design, more reliable construction methods, and plenty of exciting new features.

## 3D Printed Fluids Transfer Station



## [3D Printed Fluid Transfer Station](#)

A new 3D design and print of a Fluid Transfer Station in N Scale which would be perfect for oil refineries.

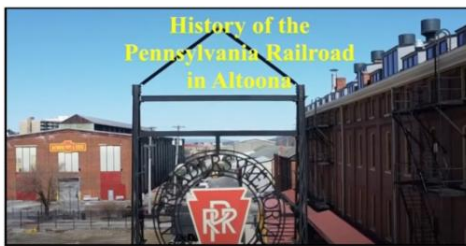
## Milford Township Couple Create Model Railroad Masterpiece



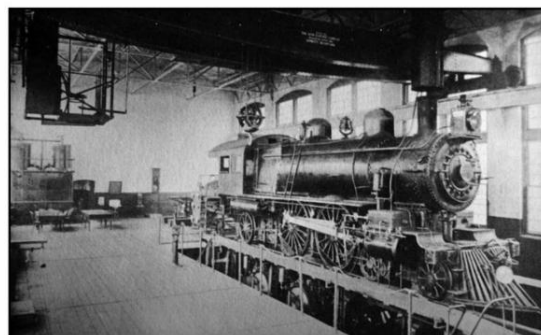


## **Model Railroad Masterpiece**

In a news piece, CBS Detroit covers this beautiful model railroad with real consideration for what it is - a fabulous work of art and labor of love depicting our world in miniature. By covering this professionally they are helping people realize this isn't just a hobby of old men in funny hats playing with toys.



## **The History of the Pennsylvania Railroad in Altoona, PA**



## **History of PRR in Altoona, PA**

This documentary was produced by students in Penn State Altoona's communications program, and aired on WPSU-TV on Saturday, November 4, 2023.

"The History of the Pennsylvania Railroad in Altoona," produced by students enrolled in COMM 490A, explores the origins of the industry in central Pennsylvania and explains how the railroad in the Altoona area served as a major contributing factor to the nation's industrial, commercial and cultural development. It also details the early 19th-century origins of railroad construction in Pennsylvania while exploring the complexities of 20th-century transportation challenges. The documentary concludes with an investigation of the importance of today's railroad industry.



# NMRA's Partnership Program



## PARTNERSHIP PROGRAM

NMRA members can log in and click on the **Benefits** tab to view the **NMRA Partnership Program**. Please patronize all of our partners for some fantastic discounts as an NMRA member!

Bespoke Rail  
CatzPaw Innovations  
CB Train Junction  
Clever Models, LLC  
Coastmans Scenic Products  
Composite Designs, Inc.  
CMR Products, LLC  
Conowingo Models  
Cowcatcher Magazine  
Daylight Sales (Merchandise)  
Deepwoods Software  
Deluxe Materials  
Diorama Hobbies  
Dwarvin Enterprises, Ltd  
East Coast Circuits  
Enterprise and National Car Rental Services  
Evan Designs  
Feight Studios  
Fusion Scale Graphics  
Gatorfoam  
Great Decals!  
Green Frog Productions  
Highways and Byways Model Railroad Graphics  
Hot Wire Foam Factory

Ipswich Hobbies  
ITLA Scale Models  
K.I.S.S Method, Inc.  
LaBelle Woodworking Co.  
LARC Products  
Logic Rail Technologies  
MAC Rail  
Micro-Mark  
Mine Mount Models  
Miniprints  
MrTrain.com  
Model Railroad Benchwork  
Model Railway Backshop  
MRC (Model Rectifier Corp)  
Model Train Catalogue  
Modelers Decals & Paint  
Motrak Models  
Mudd Creek Models  
New Creations Victorian Railroad Buildings  
Nick and Nora Designs  
Northlandz  
NScale Works by Mike Holly  
Old Depot Gallery  
Old West Scenery  
RAM Track

RR-CirKits  
R & J Details  
Scale Model Plans  
Scale Railroad Models  
Scenery Solutions  
Showcase Miniatures  
T-Trak by Denniston  
Team Track Models  
The N Scale Architech  
The Old Depot Gallery  
Tichy Train Group  
Touch of the Brush Model Weathering  
Train Installations, LLC  
Train Show, Inc.  
Trainmasters TV/Model Railroad Hobbyist Store  
TRAINZ.com  
TSG Multimedia  
UGEARS  
USA Airbrush Supply/  
Badger Airbrush  
White Rose Hobbies, LLC  
WiFi Model Railroad, LLC  
Yelton Models

[ New Partners in RED\* ]

Sept 2024

## Partnership Program

### NMRA@HOME

#### Railway Transportation History

Featured in the Division Business Car Column appearing in the October 2024 issue of NMRA Magazine.



In *The Derail*, the newsletter of the 100% NMRA Member San Jacinto Model Railroad Club, Mark Couvillion and Brian Jandy created a digitally restored copy of an instructional package for elementary and middle school teachers written by the American Association of Railroads in 1944 to teach students about the history and importance of railroads and their impact on daily life.



#### The Codorus Valley Traction Company Layout Tour

Featured in the Division Business Car Column appearing in the October 2024 issue of NMRA Magazine.

The Codorus Valley Traction Company is a compact modular layout designed and built by Don Yingling. Don's layout was featured in the *Susquehanna Sidetracks*, the newsletter of the Mid-Eastern Region's Susquehanna Division.

#### The Mud Bay & Southern Layout Tour

Featured in the Division Business Car Column appearing in the October 2024 issue of NMRA Magazine.

The Mud Bay & Southern is an N scale layout created by Jim Younkins, MMR®. This 1970s layout features the logging industry of Washington State and was featured in the *Switchlist*, the official publication of the Pacific Northwestern Region.





### To Tip or Not to Tip

Featured in the *Division Business Car* Column appearing in the October 2024 issue of NMRA Magazine.

Chris Carfaro, editor of the Northeastern Region's *NER Coupler* magazine, calls out some model railroad equipment manufacturers for not providing easily understandable instructions for their products. His stance is that you shouldn't need an engineering degree to understand a model railroad product manual.

### Defect Detectors

Featured in the *Division Business Car* Column appearing in the October 2024 issue of NMRA Magazine.



David Bristow of the Rocky Mountain Regions explains how and what defect detectors are in the region's publication, *The Milepost*. If you model the contemporary railroading, David also included photos to help model them.

The ***Division Business Car*** column appears in even-numbered months in NMRA Magazine. It's loaded with great modeling ideas, plus useful information that can help make your Division, Region, or 100% NMRA Club even better. The information comes from articles published in Region, Division, and Club newsletters. The best of these articles are posted on the NMRA website. You can read the entire archive, from as far back as 2011 right up to the latest posting, by clicking [here](#).

Previous issues of the ***NMRA Turntable*** are available on the Turntable Archives page. You must first log in as a member at: [nmra.org](http://nmra.org) After you are in the members-only section, then you must hover over 'Publications' on the menu bar, then 'NMRA Turntable', and then click on one of the list of back issues.

Editor: [Paul Voelker, HLM](#)

Executive Editor: [Rick Coble](#)

*The NMRA Turntable is an official monthly production of the National Model Railroad Association, Inc. Publishing Department (Riley Triggs Manager). Its purpose is to introduce NMRA members to a selection of instructional videos and online publications that they may find of interest. If you know of an NMRA member who is not receiving this mailing, please direct them to [here](#) to update their email address. If you no longer wish to receive these mailings, please don't mark them as SPAM. Instead, click the Safe Unsubscribe link at the bottom of this page. ©2021 National Model Railroad Association, Inc., P.O. Box 1328, Soddy Daisy TN 37384.*

